



DISTRICT OF COLUMBIA  
BUILDING INDUSTRY ASSOCIATION

---

# OXON RUN COMMUNITY MEETING

---

July 13, 2022

# DCBIA ANNUAL COMMUNITY IMPROVEMENT DAY

- run by the **DCBIA Community Services Corporation**, operating exclusively for educational and charitable purposes
- architects, landscape architects, contractors, consultants, and key stakeholders team up to design and build projects that have meaningful impacts in our local community
- made possible due to generous donations of money, professional/technical services, materials, equipment, and other resources, along with the support of many volunteers



# 2019 CID AT OXON RUN



# WHAT WE HEARD FROM THE COMMUNITY...

HIGHER STAGE AT  
AMPHITHEATER/BACKDROP  
AT AMPHITHEATER

OUTDOOR LEARNING  
NODES

ACCESSIBLE SEATING  
(PLANTER/BENCH  
COMBO)

ADD ART TO  
EXISTING SHIPPING  
CONTAINER

REPURPOSE DONATED  
PLANTERS

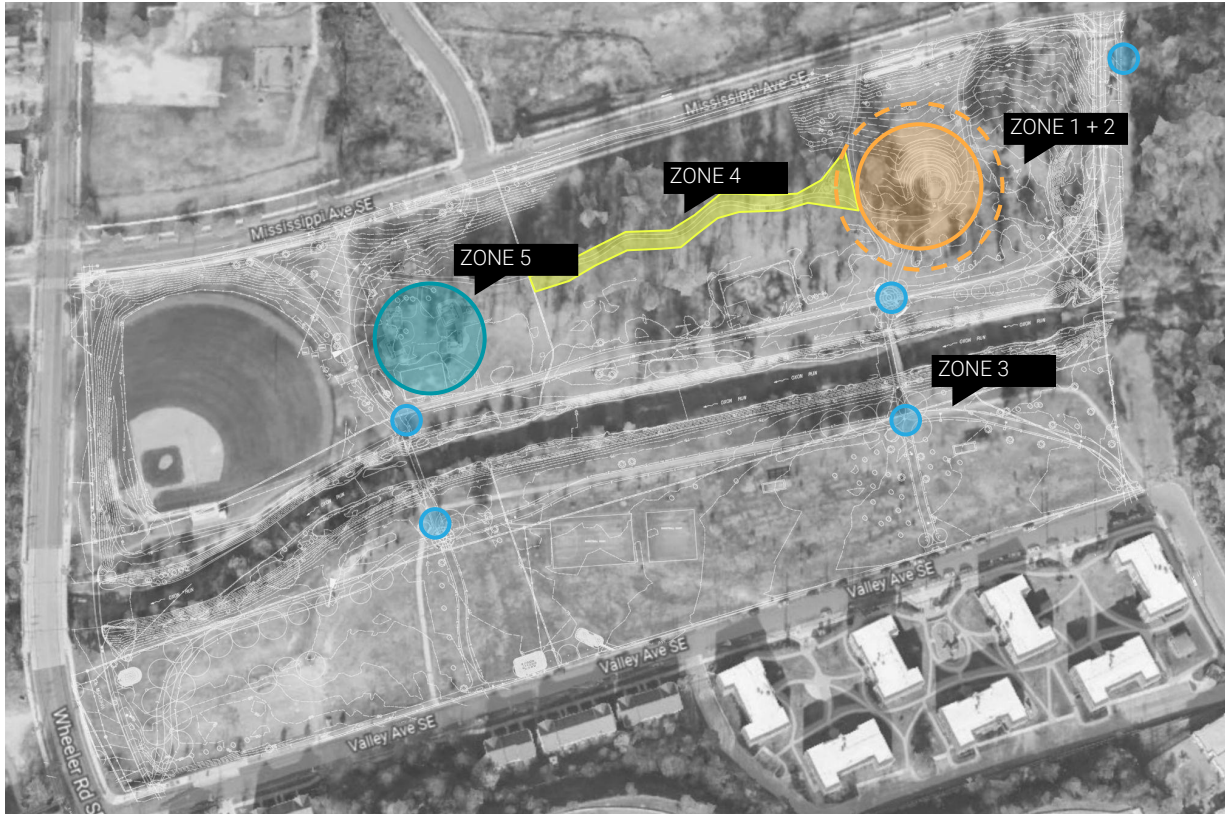
CONNECT SCIENCE  
+ NATURE

PRESERVE **SAFE**  
GREENSPACE FOR  
THE YOUTH

**priorities / themes**



# SCOPE OF WORK - OXON RUN



## ZONE 1 + 2

- Upgrades to performance area
- Learning nodes, new picnic benches

## ZONE 3

- Repurpose planters as landmarks
- Artwork mural at shipping container

## ZONE 4

- Colorful tree canopy lighting
- Hands-on music play along the trail
- Interactive community gear board
- Play equipment along trail

## ZONE 5

- Maintenance of horseshoe/picnic area

## ZONE 6

- Landscaping throughout the site

# ZONE 1 - PERFORMANCE

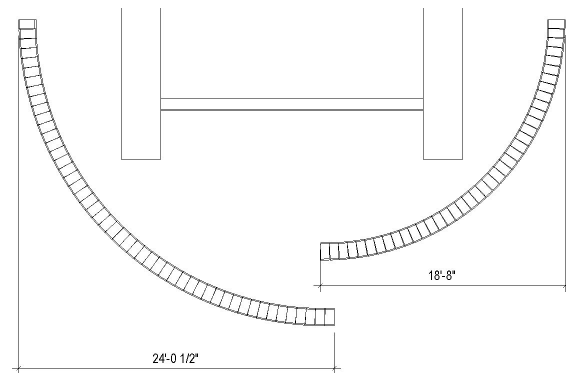
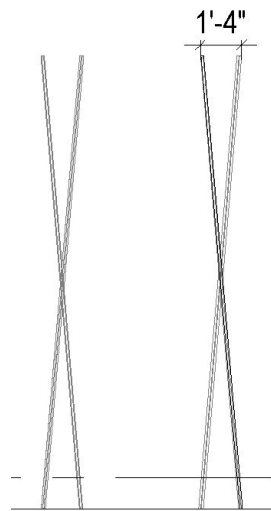
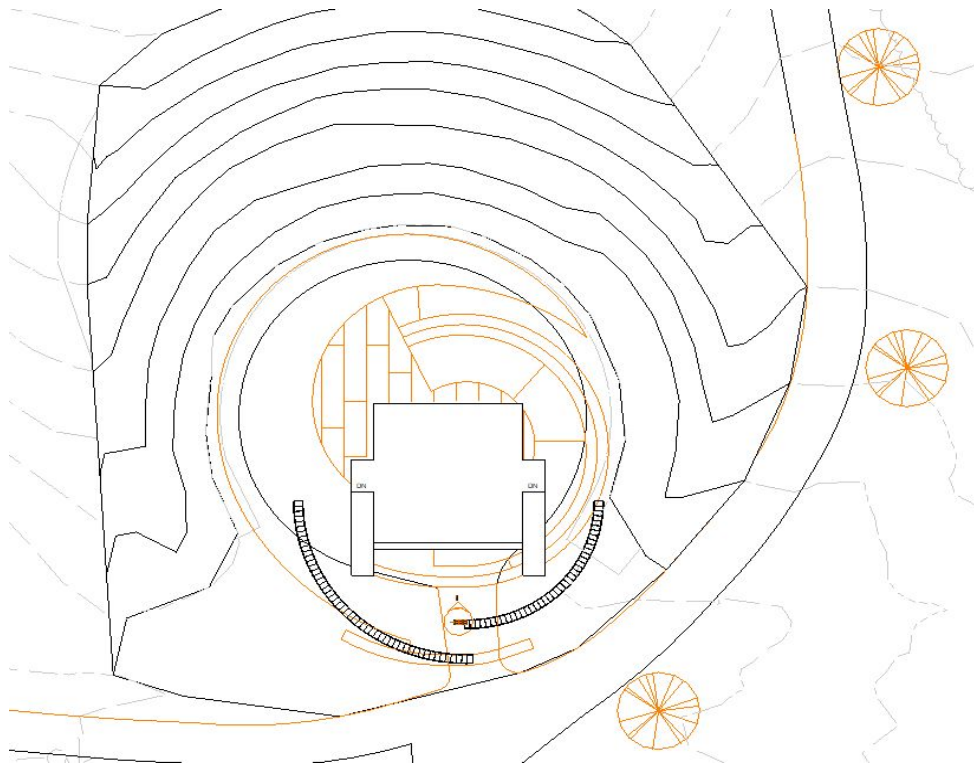
STANTEC / SMITHGROUP + MONARC



- Square off and expand stage
- Rise stage to be 18" above the ground
- Add 2 ramps for increased accessibility to the stage
- Deploy backdrop for stage while still having a small amount of site transparency
- Backdrop to also host mounting points for props such as curtains, stage set pieces, and screen fabrics.

# ZONE 1 - PERFORMANCE

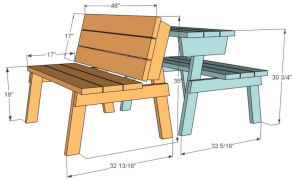
STANTEC / SMITHGROUP + MONARC



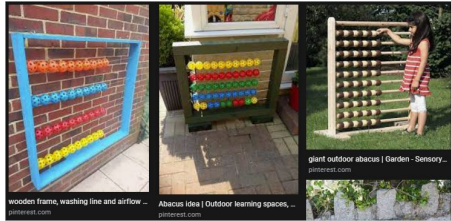


# ZONE 2 - LEARNING NODES AROUND AMPHITHEATER

SMITHGROUP / STANTEC + DPR



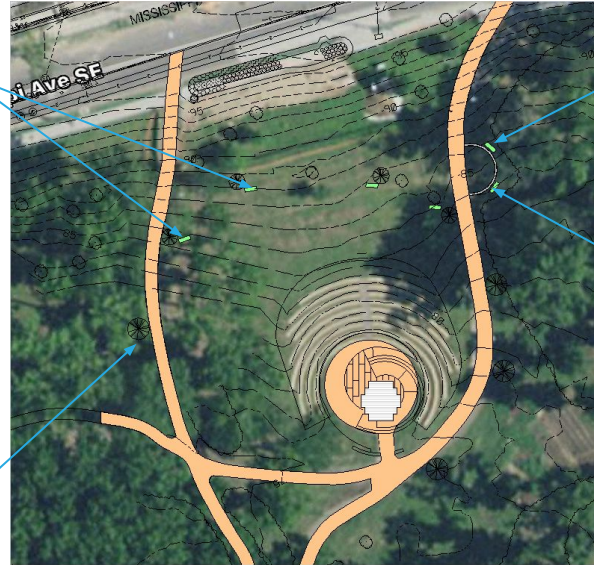
Foldable Table/Bench



wooden frame, washing line and airflow  
Abacus idea | Outdoor learning spaces,  
girl outdoor abacus | Garden - Sensory



Abacus added to Community Gear Board area



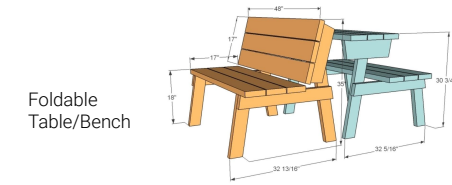
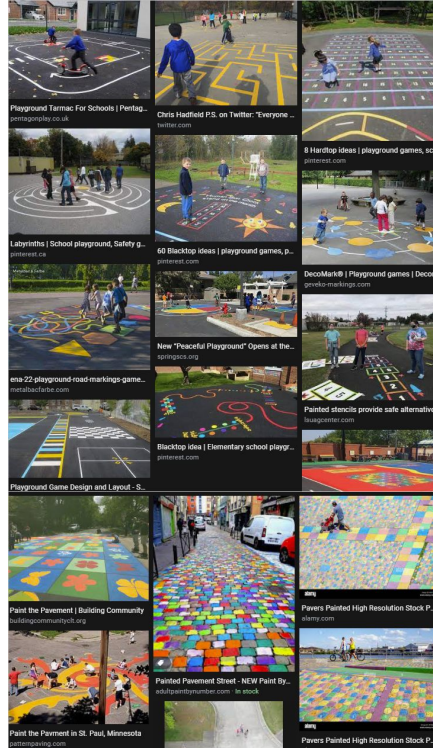
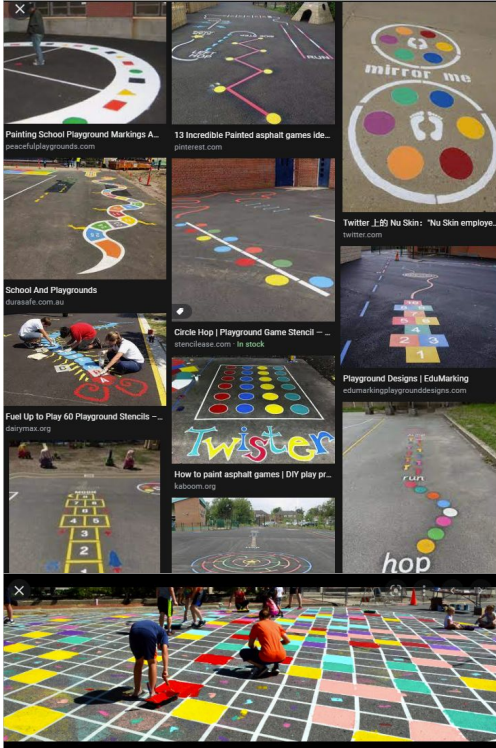
Bubble Table

Sand Table

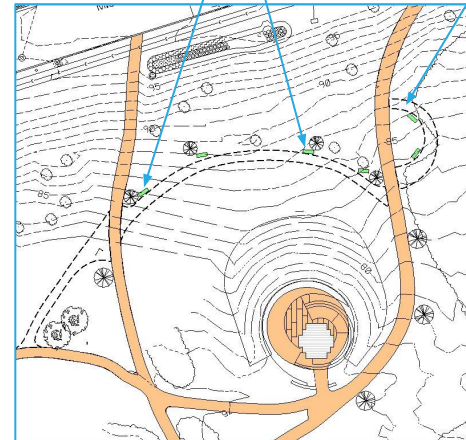


# ZONE 2 - PATHWAY

SMITHGROUP / STANTEC + DPR



Foldable Table/Bench



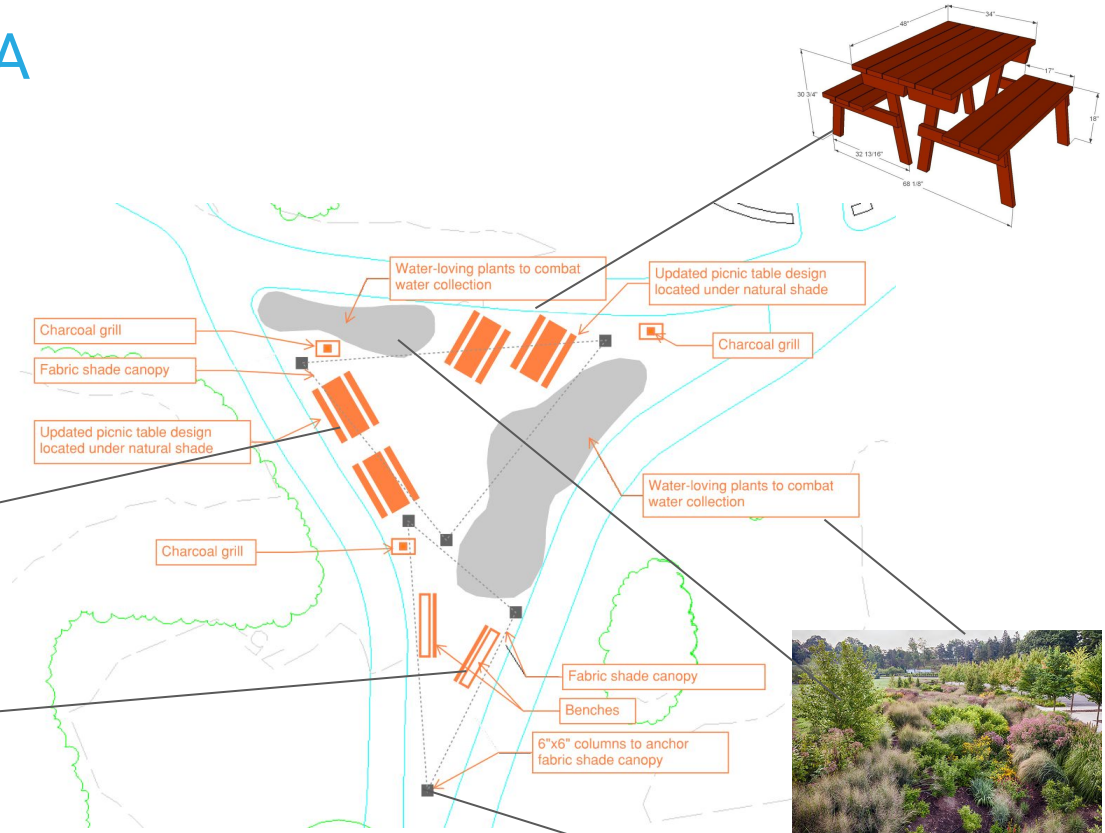
New Alternate Gravel Path



# ZONE 2 - PICNIC AREA

SMITHGROUP / STANTEC + DPR

- Remove canopy
- Add potential trashcans locations as shown
- Making the posts more usable i.e. add eye hooks

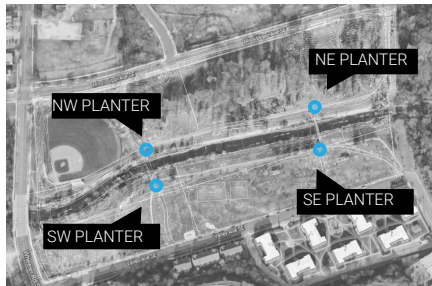


# ZONE 3 - SIGNAGE/WAYFINDING/GATHERING POINTS

PERKINS EASTMAN + DAVIS



KEY PLAN

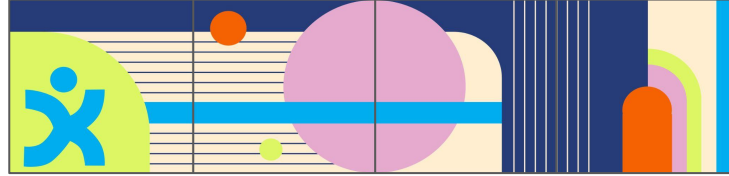


# ZONE 3 - SIGNAGE/WAYFINDING/GATHERING POINTS

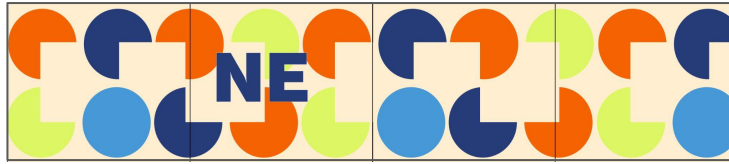
PERKINS EASTMAN + DAVIS



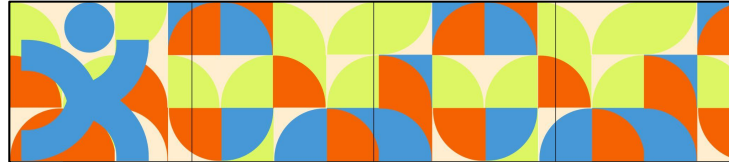
OPTION 1 GRAPHIC



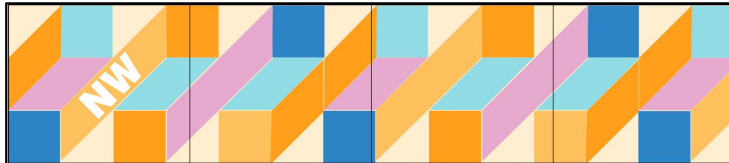
OPTION 2 GRAPHIC



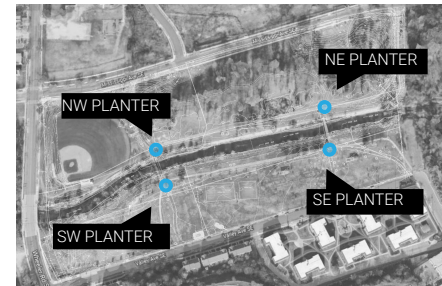
OPTION 1 GRAPHIC



OPTION 2 GRAPHIC



KEY PLAN



# ZONE 3 - SIGNAGE/WAYFINDING/GATHERING POINTS

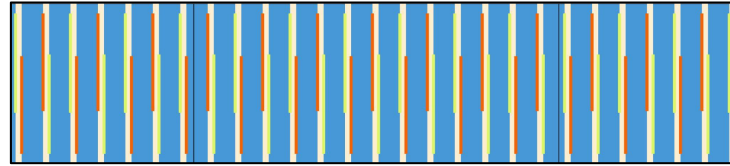
PERKINS EASTMAN + DAVIS



OPTION 1 GRAPHIC



OPTION 2 GRAPHIC



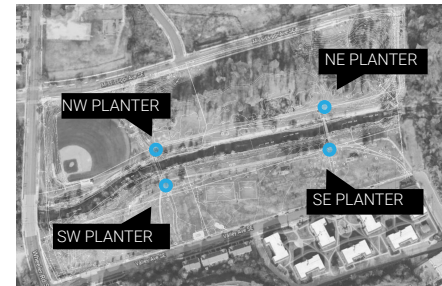
OPTION 1 GRAPHIC



OPTION 2 GRAPHIC



KEY PLAN



# ZONE 3 - SIGNAGE/WAYFINDING/GATHERING POINTS

PERKINS EASTMAN + DAVIS



OPTION 1 GRAPHIC



OPTION 2 GRAPHIC



# ZONE 4 - SENSORY WALK - OVERVIEW

HOK + CLARK





# ZONE 4 - SENSORY WALK - COMMUNITY GEAR BOARD

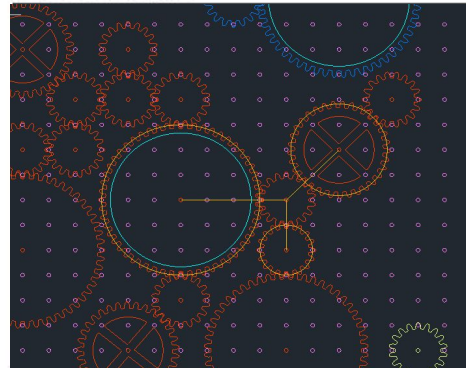
HOK + CLARK



REPURPOSE



INTERACTIVE GEARS



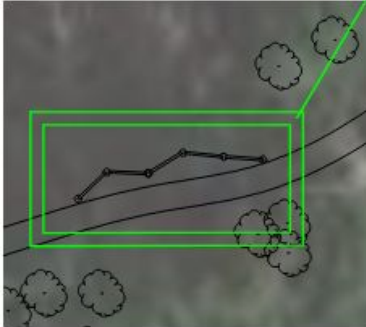
QR CODES ON GEARS LEAD TO ONLINE COMMUNITY BOARD

# ZONE 4 - SENSORY WALK - BALANCE BEAMS

HOK + CLARK



COMMON TREATED TIMBER SIZES, OR  
COMPOSITE TREX MATERIAL.



PROVIDE FUN, ALTERNATIVE  
PATH ACROSS KNOWN LOW  
POINTS AND PUDDLES



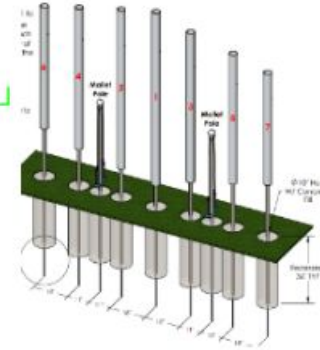
HELP  
PREVENT  
VEHICULAR  
TRAVEL ON  
TRAIL



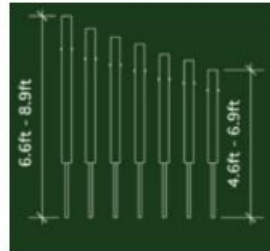
# ZONE 4 - SENSORY WALK - CHIMES

HOK + CLARK

DURABLE,  
CREATIVE AUDIO  
SENSORY  
EXPERIENCE TO  
THE TRAIL - FUN  
FOR ALL AGES



EASY TO DIG-AND-POUR  
CONCRETE FOOTERS

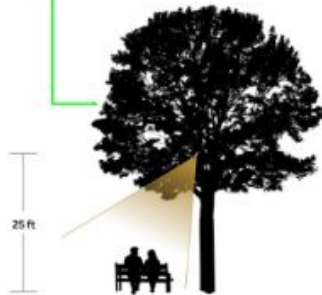
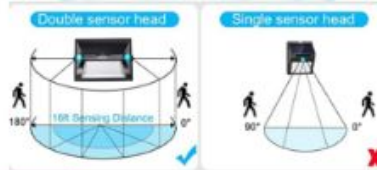


# ZONE 4 - SENSORY WALK - LIGHTS

HOK + CLARK

SOLAR POWERED, MOTION SENSORED FOR LONGEVITY AND AVOIDS DISRUPTION FOR WILDLIFE

MOUNTED IN THE TREES, UP OFF THE GROUND FOR DURABILITY AND MAXIMUM COVERAGE

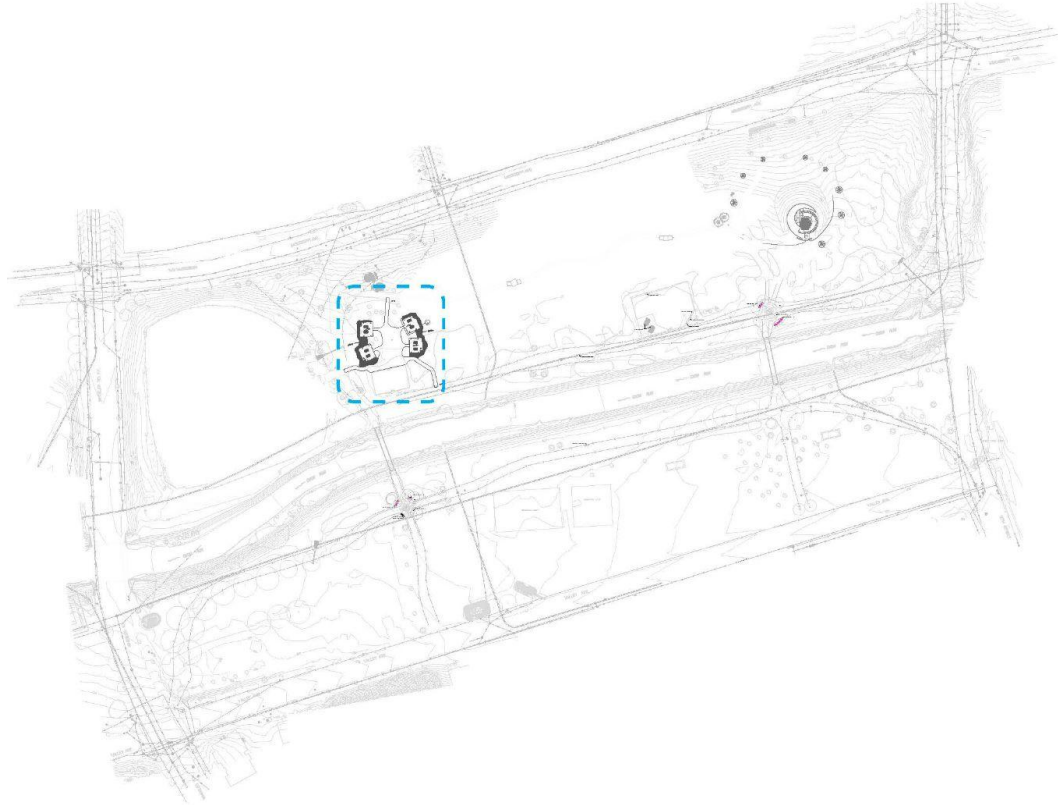


COLORFUL SOLUTION TO POOR LIGHTING FOR SAFETY ALONG TRAIL



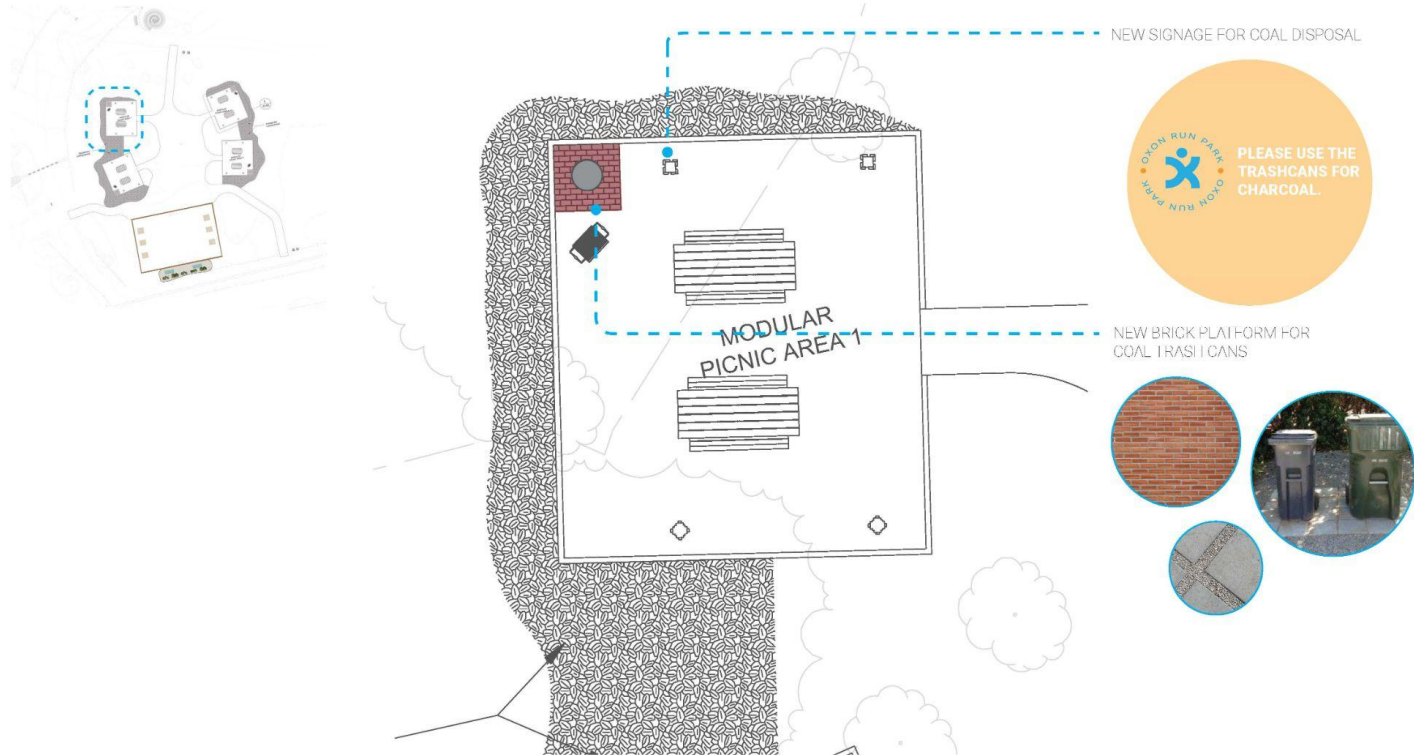
# ZONE 5 - HORSESHOE/PICNIC AREA

HYL + HITT



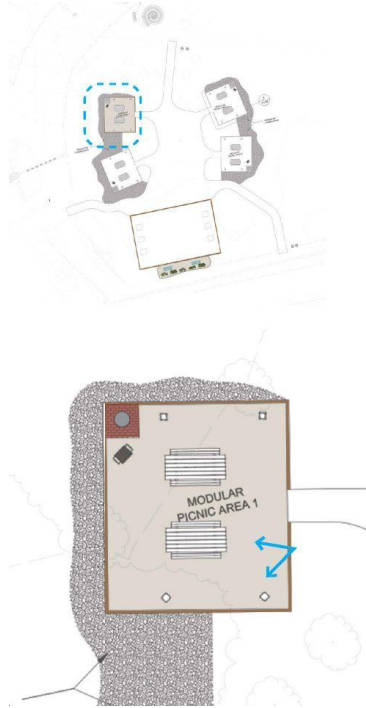
# ZONE 5 - HORSESHOE/PICNIC AREA

HYL + HITT



# ZONE 5 - HORSESHOE/PICNIC AREA

HYL + HITT



PAINT EXISTING POSTS TO MATCH COLOR SCHEME

REPLACE WOOD SURROUND

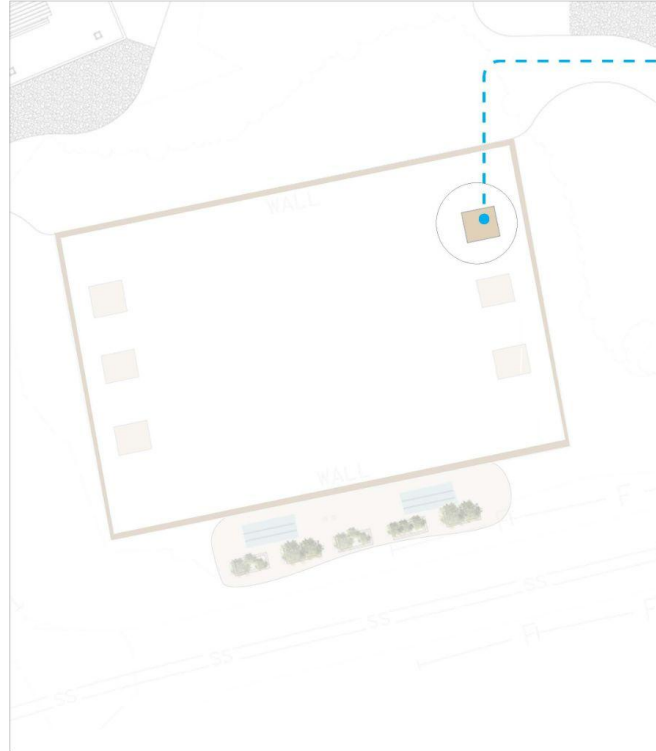
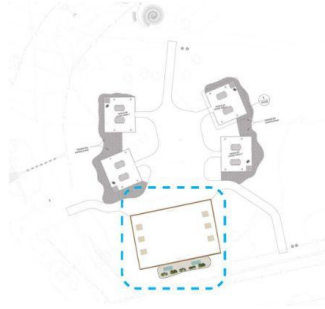
PAINT EXISTING PICNIC TABLES TO MATCH COLOR SCHEME

MODIFY TABLE TOP WIDTH TO ALLOW FOR MORE COMFORTABLE SEATING

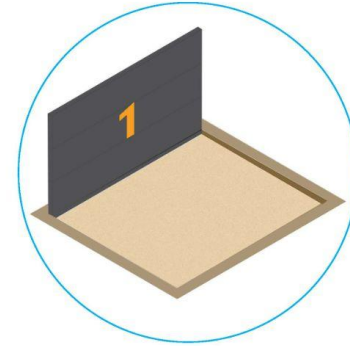
REMOVE GRASS & FILL AREA WITH WOOD CHIPS

# ZONE 5 - HORSESHOE/PICNIC AREA

HYL + HITT



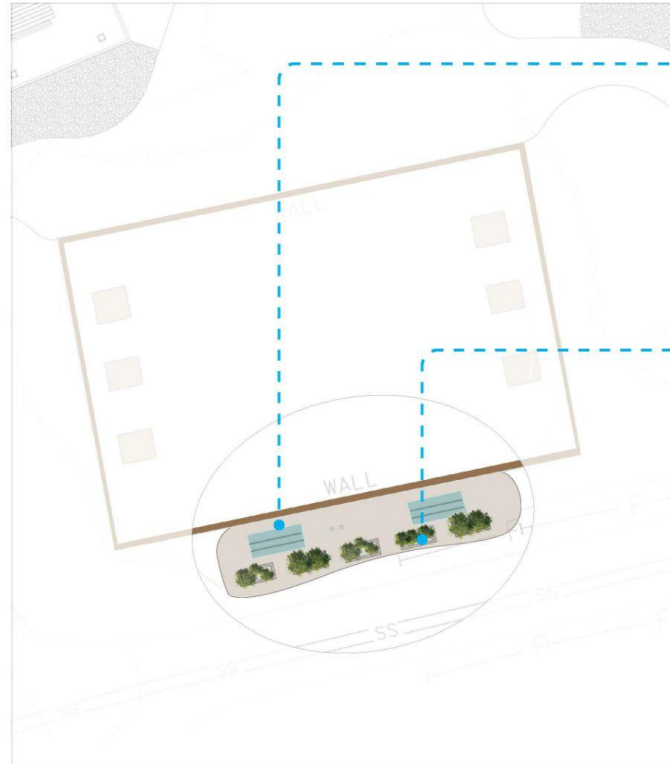
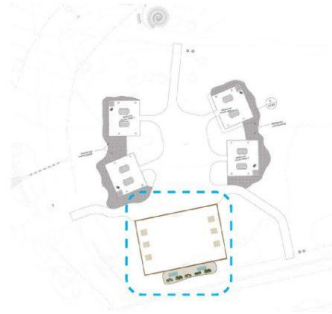
RESTORE AND REPAINT HORSESHOE BACKBOARDS. REFILL EACH PIT WITH NEW SAND. REPLACE HORSESHOE STAKES. REFINISH EDGES.





# ZONE 5 - HORSESHOE/PICNIC AREA

HYL + HITT



RE-FINISH BENCHES AND PAINT TO MATCH COLOR SCHEME



ADD PLANTERS & WOOD CHIPS BEHIND BENCHES TO PROVIDE SOME SEPARATION FROM THE ROAD AND HORSESHOE PIT



# ZONE 6 - LANDSCAPING THROUGHOUT SITE

**GROUNDCOVER**  
FULL SUN /  
PART SHADE



Mix Sedum Mat



Dwarf Fothergilla  
*Fothergilla gardenii*



Creeping Juniper  
*Juniperus horizontalis*



Wild Ginger  
*Asarum canadense*



Purple Cone Flower  
*Echinacea purpurea*



Inkberry  
*Ilex glabra compacta*



Allium  
*Allium senescens Mini Milli*



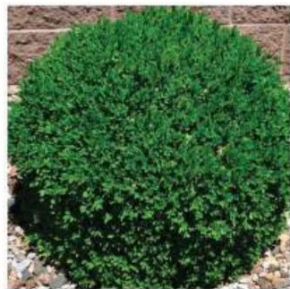
Christmas Fern  
*Polystichum acrostichoides*



Sporobolus heterolepis  
*Prarie dropseed*



Creeping Oregon Grape  
*Berberis repens*



Boxwood Green Velvet  
*Buxus 'Green Velvet'*



Black Eyed Susan  
*Fritillaria meleagris*



Pink Muhlenbergia  
*Muhlenbergia capillaris*

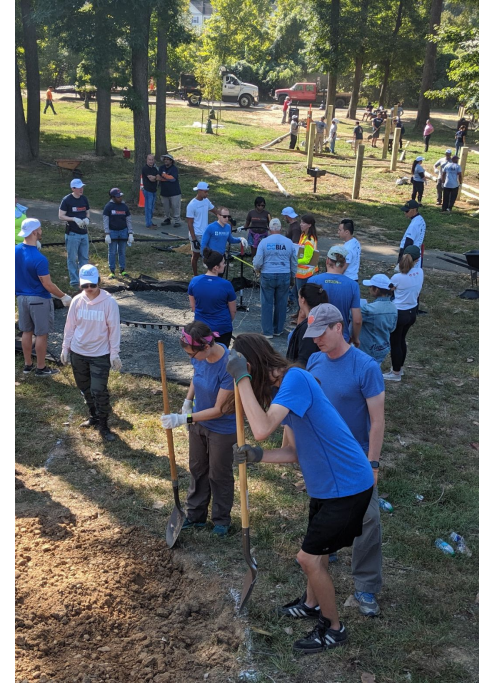


Sedge  
*Carex pensylvanica*



Sprite Winterberry

# ZONE 7 - GENERAL LOGISTICS FOR BUILD DAY



# QUESTIONS, COMMENTS + INPUT

