



Update on Stream Restoration and Natural Resource Data Collection Efforts

July 19, 2022

Presented to: The Friends of Oxon Run

By: Mike Galvin, JMT



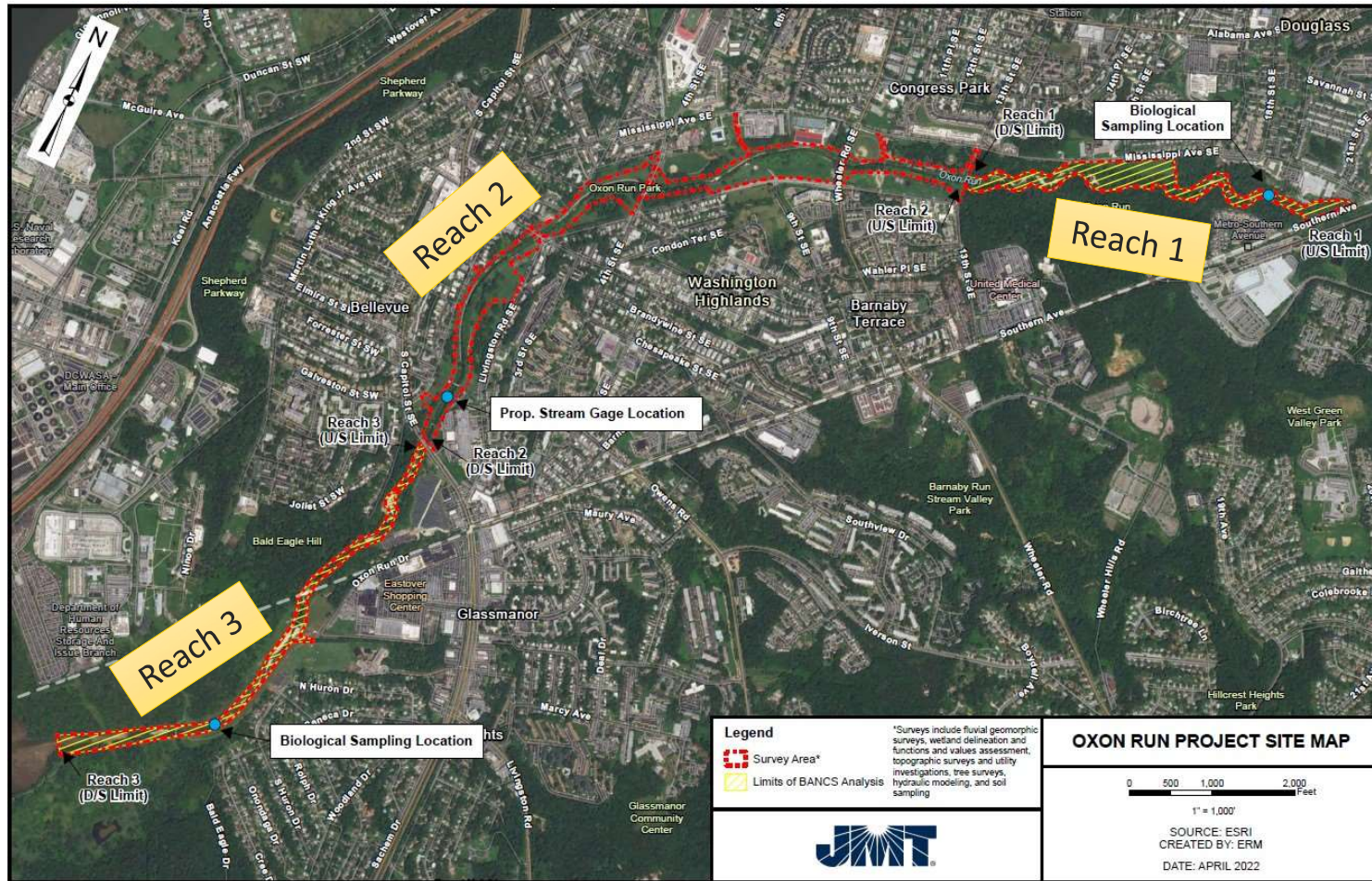


Opening Remarks

Our Agenda

1. Site Access & Permit Status
2. Data Collected So Far
3. Upcoming Efforts / Schedule

Project Map



Site Access & Permit Status

- QAPP – Quality Assurance Project Plan
 - Submitted April 25, 2022
 - Approved May 10, 2022
- Scientific Permits for Macroinvertebrate & Fish Sampling
 - NPS Research Permit (#1) – April 4, 2022
 - Maryland Collection Permit – April 5, 2022
 - DOEE Research Permit – April 14, 2022
- NPS Research Permit (#2)
 - Approved June 1, 2022
- NPS Special Use Permit
 - Submitted May 19, 2022
- DPR Right of Entry Permit
 - TBD [For soil borings]

Data Collection

Macroinvertebrate Sampling

- Year 1 Sampling – April 27, 2022
- *Reach 1 had a surprising abundance of critters, including crayfish, damselflies and caddisflies as well as some incidentally caught creek chubs and a green sunfish.*
- *Reach 3 had more limited habitat but we still managed to collect several different macroinvertebrates, and we also incidentally caught a young American eel and observed several fish and a water snake in the area.*
- Three sampling events over three years



Data Collection

Wetland Delineations

- June - August
- Complete in Reach 2, Reaches 1 & 3 remain
- Great blue heron, green heron, black-crowned night heron, osprey, bald eagle, red fox.
- Vernal Pools and Rare Wetland Communities



Data Collection

Tree Survey

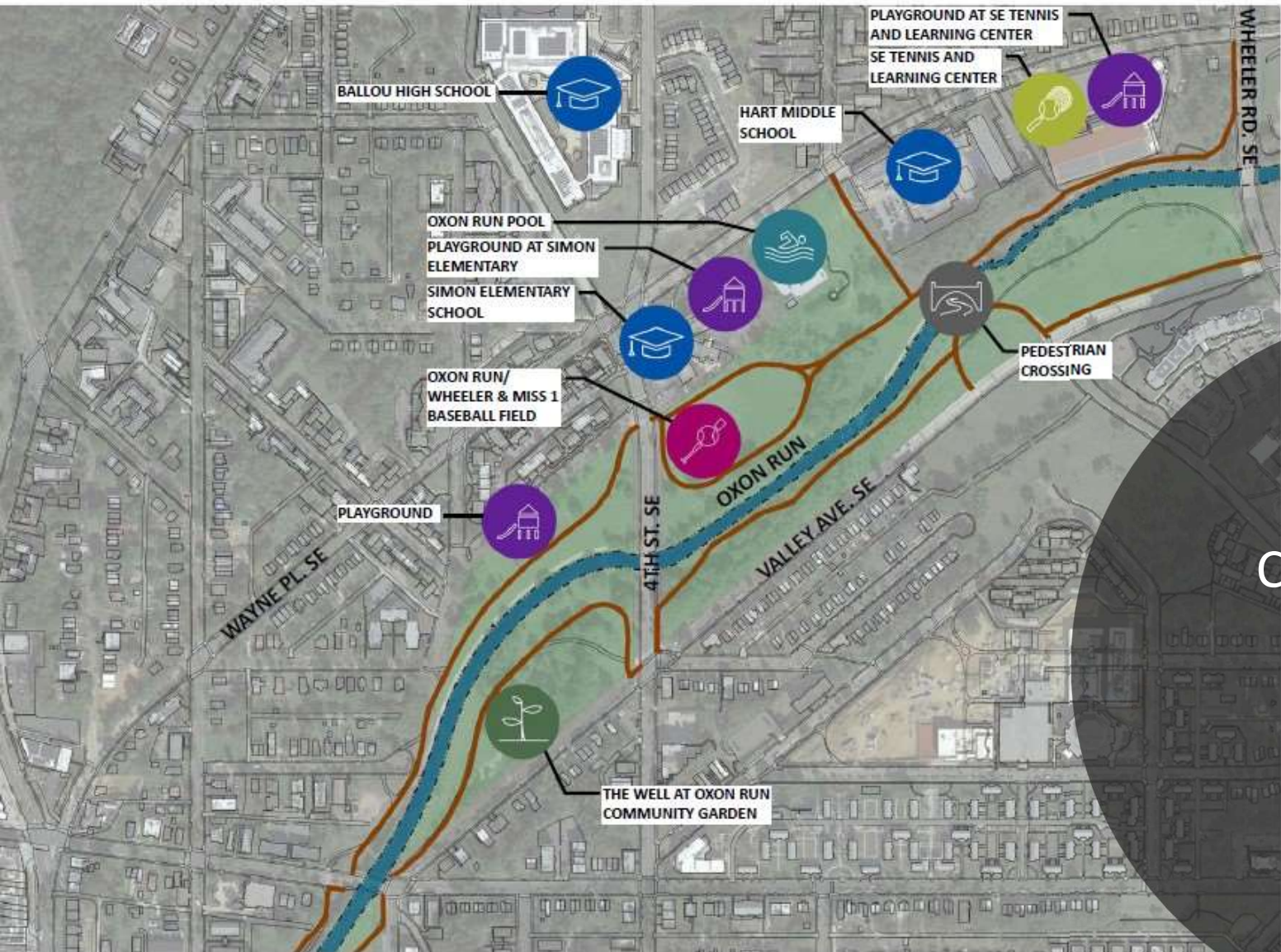
- June - August
- Complete in Reaches 1 & 2, Reach 3 remains
- *Locations, species, and general health of individual trees with a diameter equal to or greater than 10 inches*
- *Sample plots to determine average density of trees with a diameter of 5 inches and greater.*



Data Collection

Topographic Survey

- June – Fall 2022
- In progress in Reach 2
 - Control Network complete (GPS observations, conventional traversing, and Digital Levels)
 - Topo is ½ complete
 - Processing and QA/QC in progress
 - *The job has been going well. There is nothing unusual/unique so far. Just topo in some thick vegetative areas making sight lines challenging*
- Reaches 1 & 3 remain



- LEGEND**
- SCHOOL
 - COMMUNITY GARDEN
 - PLAYGROUND
 - PEDESTRIAN CROSSING
 - BASKETBALL COURT
 - BASEBALL FIELD
 - TENNIS COURTS
 - SWIMMING POOL
 - PICNIC AREA
 - NATURAL ELEMENT
 - AMPHITHEATER
 - BEE HIVE

Existing Park Characteristics

In Progress



Data Collection

Cultural Resources Investigations

- August – Fall 2022
- National Historic Preservation Act (NHPA)
Section 106 Compliance
- Phase 1A Archival Research and
Archaeological Survey

Data Collection

Fish Survey

- Year 1 Sampling - Tuesday August 16th
- Rain Date: Thursday August 18th
- Three sampling events over three years
- Interested parties are welcome to observe!
 - Mgalvin@jmt.com



Data Collection

Stream Investigations

- Habitat assessment and site walk
- Once SUP approved:
 - Soil samples to be retrieved and analyzed
 - Installation of bank pins
 - Geomorphic investigations
- Stream Gage and pressure transducer installation coordination ongoing



Data Collection

Public Outreach

- Initial outreach started
 - Two events on June 4, 2022
 - Ward 8 Water Watchers – July 12, 2022
 - BCBIA Community Build Day – July 13, 2022
- Community meetings, design charettes & community walks
 - Following data collection and to help guide design efforts
 - Community engagement included consistently throughout the 5-year design and permitting process





Questions

Contact us:

Mike Galvin

410-316-2471

Mgalvin@jmt.com

Jeremy Koser

410-316-2360

Jkoser@jmt.com